

[illegible]

CLIENT COHEN-ESREY  
DEVELOPMENT  
GROUP, LLC

PROJECT NUMBER: 2021-22

PROJECT NAME

THE LOFTS AT  
CREEKVIEW

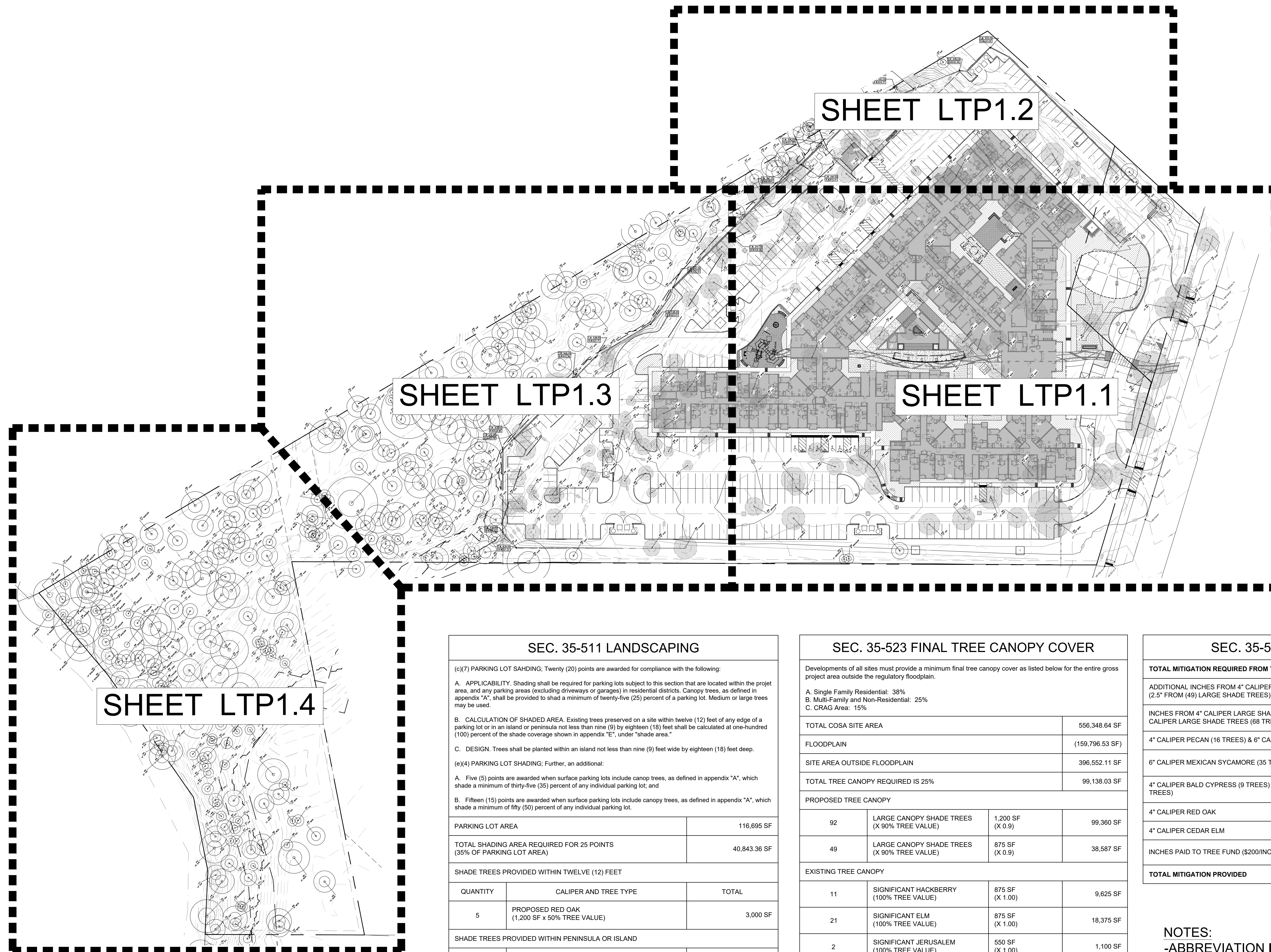
EAST COMMERCE STREET  
SAN ANTONIO, TX, 78219



100% CD SET

## OVERALL TREE PROTECTION PLAN

# LTP 1.0



(c)(7) **PARKING LOT SHAIDING:** Twenty (20) points are awarded for compliance with the following:

- A. **APPLICABILITY.** Shading shall be required for parking lots subject to this section that are located within the project area, and any parking areas (excluding driveways or garages) in residential districts. Canopy trees, as defined in appendix "A", shall be provided to shade a minimum of twenty-five (25) percent of a parking lot. Medium or large trees may be used.
- B. **CALCULATION OF SHADED AREA.** Existing trees preserved on a site within twelve (12) feet of any edge of a parking lot or in an island or peninsula not less than nine (9) by eighteen (18) feet shall be calculated at one-hundred (100) percent of the shade coverage shown in appendix "E," under "shade area."
- C. **DESIGN.** Trees shall be planted within an island not less than nine (9) feet wide by eighteen (18) feet deep.

(e)(4) **PARKING LOT SHADING:** Further, an additional:

- A. Five (5) points are awarded when surface parking lots include canopy trees, as defined in appendix "A", which shade a minimum of thirty-five (35) percent of any individual parking lot; and
- B. Fifteen (15) points are awarded when surface parking lots include canopy trees, as defined in appendix "A", which shade a minimum of fifty (50) percent of any individual parking lot.

PARKING LOT AREA		116,695 SF
TOTAL SHADING AREA REQUIRED FOR 25 POINTS (35% OF PARKING LOT AREA)		40,843.36 SF
SHADE TREES PROVIDED WITHIN TWELVE (12) FEET		
QUANTITY	CALIPER AND TREE TYPE	TOTAL
5	PROPOSED RED OAK (1,200 SF x 50% TREE VALUE)	3,000 SF
SHADE TREES PROVIDED WITHIN PENINSULA OR ISLAND		
QUANTITY	CALIPER AND TREE TYPE	TOTAL
19	PROPOSED MEXICAN SYCAMORE (1,200 SF x 75% TREE VALUE)	17,100 SF
17	PROPOSED RED OAK (1,200 SF x 75% TREE VALUE)	15,300 SF
6	PROPOSED CEDAR ELM (875 SF x 75% TREE VALUE)	3,937.75 SF
2	PROPOSED PECAN (1200 SF x 75% TREE VALUE)	1,800 SF
TOTAL PARKING LOT SHADING PROVIDED		41,137.75 SF
TOTAL POINTS		25 POINTS

Developments of all sites must provide a minimum final tree canopy cover as listed below for the entire gross project area outside the regulatory floodplain.

A. Single Family Residential: 38%

B. Multi-Family and Non-Residential: 25%

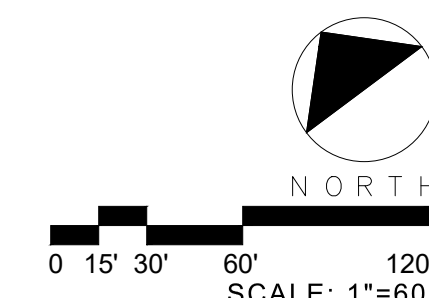
C. CRAG Area: 15%

TOTAL COSA SITE AREA			556,348.64 SF
FLOODPLAIN			(159,796.53 SF)
SITE AREA OUTSIDE FLOODPLAIN			396,552.11 SF
TOTAL TREE CANOPY REQUIRED IS 25%			99,138.03 SF
PROPOSED TREE CANOPY			
92	LARGE CANOPY SHADE TREES (X 90% TREE VALUE)	1,200 SF (X 0.9)	99,360 SF
49	LARGE CANOPY SHADE TREES (X 90% TREE VALUE)	875 SF (X 0.9)	38,587 SF
EXISTING TREE CANOPY			
11	SIGNIFICANT HACKBERRY (100% TREE VALUE)	875 SF (X 1.00)	9,825 SF
21	SIGNIFICANT ELM (100% TREE VALUE)	875 SF (X 1.00)	18,375 SF
2	SIGNIFICANT JERUSALEM (100% TREE VALUE)	550 SF (X 1.00)	1,100 SF
10	SIGNIFICANT MESQUITE (100% TREE VALUE)	550 SF (X 1.00)	5,500 SF
TOTAL CANOPY PROVIDED			172,547 SF

<b>TOTAL MITIGATION REQUIRED FROM TREE INVENTORY</b>	<b>555.4 INCHES</b>
ADDITIONAL INCHES FROM 4" CALIPER LANDSCAPE ORDINANCE TREES (2.5" FROM (49) LARGE SHADE TREES)	122.5 INCHES PROVIDED
INCHES FROM 4" CALIPER LARGE SHADE TREES (24 TREES) AND 6" CALIPER LARGE SHADE TREES (68 TREES)	504 INCHES PROVIDED
4" CALIPER PECAN (16 TREES) & 6" CALIPER PECAN (17 TREES)	33 (23.4%)
6" CALIPER MEXICAN SYCAMORE (35 TREES)	35 (24.8%)
4" CALIPER BALD CYPRESS (9 TREES) & 6" CALIPER BALD CYPRESS (16 TREES)	25 (17.7%)
4" CALIPER RED OAK	24 ( 17.0%)
4" CALIPER CEDAR ELM	24 (17.7%)
INCHES PAID TO TREE FUND (\$200/INCH) - \$0	0 INCHES PROVIDED
<b>TOTAL MITIGATION PROVIDED</b>	<b>626.5 INCHES</b>

NOTES:  
-ABBREVIATION **RIP** DENOTES  
CALCULATION DONE IN 30'  
RIPARIAN BUFFER

(E) TOTAL TREE PRESERVATION CALCULATIONS (UPLAND SITE + 30' RIPARIAN BUFFER)												
	Sub. Tot. inches RIP:	0	6	36	96	101	97	0	0	0	0	0
	Total inches by category RIP:	6			132		198		0		0	0
	Sub. Tot. Inches Upland:	0	0	399	65	1010	157	0	0	0	26	0
	Total inches by category Upland:	0	0		464		1167		0	0	26	26
	Sub. Tot. Inches ROW (not in percent):	0	0	0	0	54	0	0	0	0	0	0
	Total inches by category ROW (not in percent):	0	0				54		0	0	0	0
Preservation percentage:	Understory Preservation (%)	100%			Significant Preservation (%)	21%		Heritage Preservation (%)	100%			
	Mitigation required (Commercial) :	0			Commercial (inches)	55.4		Heritage Mitigation (inches)	0			
								TOTAL MITIGATION REQUIRED (inches)	55.4			

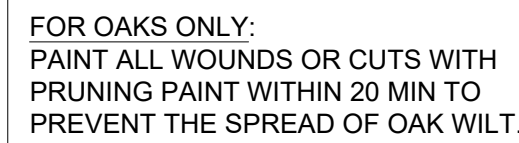




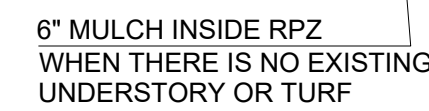


## 04 TREE ARMOR DETAIL

ELEVATION NOT TO SCALE



### 03 BRANCH PRUNING



## 02 TREE PROTECTION ZONE



## TP 1.2

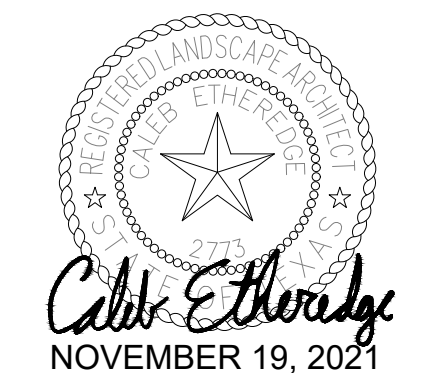




[illegible]

CLIENT COHEN-ESREY  
DEVELOPMENT  
GROUP, LLC

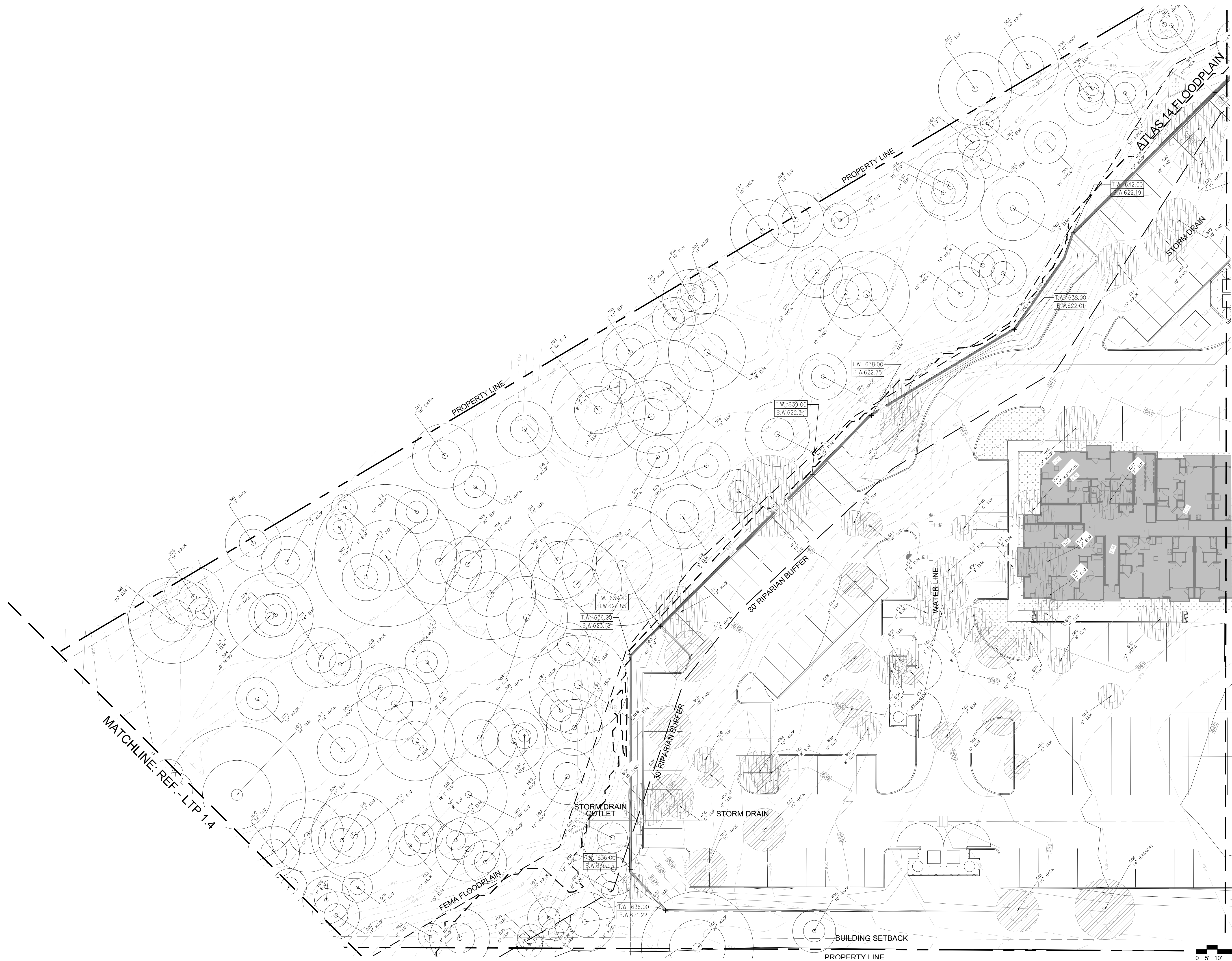
PROJECT NUMBER: 2021-22  
PROJECT NAME  
**THE LOFTS AT  
CREEKVIEW**  
EAST COMMERCE STREET  
SAN ANTONIO, TX, 78219



100% CD SET

# TREE PROTECTION PLAN

## LTP 1.3





2.) ALL TREES SHOWN ON THIS PLAN TO BE RETAINED OR REPLANTED SHALL BE MAINTAINED DURING CONSTRUCTION WITH TEMPORARY FENCING.

2.) TREE PROTECTION FENCES SHALL BE ERECTED ACCORDING TO CITY OF SAN ANTONIO STANDARDS FOR TREE PROTECTION.

3.) TREE PROTECTION FENCES SHALL BE INSTALLED PRIOR TO THE COMMENCEMENT OF ANY SITE PREPARATION WORK (CLEARING, GRUBBING OR GRADING), AND SHALL BE MAINTAINED THROUGHOUT ALL PHASES OF THE CONSTRUCTION PROJECT.

4.) FENCES SHALL COMPLETELY SURROUND THE TREE OR CLUSTERS OF TREES; SHALL BE LOCATED AT THE OUTERMOST LIMITS OF THE TREE BRANCHES (DRIPLINE); AND SHALL BE MAINTAINED THROUGHOUT THE CONSTRUCTION PROJECT IN ORDER TO PREVENT THE FOLLOWING:

A.) SOIL COMPACTION IN THE ROOT ZONE AREA RESULTING FROM VEHICULAR TRAFFIC OR STORAGE OF EQUIPMENT OR MATERIALS.

B.) ROOT ZONE DISTURBANCES DUE TO GRADE CHANGES (GREATER THAN 6 INCHES CUT OR FILL) OR TRENCHING NOT REVIEWED AND AUTHORIZED BY THE CITY ARBORIST.

C.) WOUNDS TO EXPOSED ROOTS, TRUNK OR LIMBS BY MECHANICAL EQUIPMENT.

D.) OTHER ACTIVITIES DETRIMENTAL TO TREES SUCH AS CHEMICAL STORAGE, CONCRETE TRUCK CLEANING, AND FIRES.

5.) EXCEPTIONS TO INSTALLING FENCES AT TREE DRIPLINES MAY BE PERMITTED IN THE FOLLOWING CASES: PROVIDED NO WORK IS CLOSER THAN  $\frac{1}{2}$  ROOT PROTECTION ZONE (RPZ) AND THE CONTRACTOR COORDINATES WITH THE CITY OF SAN ANTONIO INSPECTOR.

A.) WHERE PERMEABLE PAVING IS TO BE INSTALLED, ERECT THE FENCE AT THE OUTER LIMITS OF THE PERMEABLE PAVING AREA.

B.) WHERE TREES ARE CLOSE TO PROPOSED BUILDINGS, ERECT THE FENCE NO CLOSER THAN 6 FEET TO THE BUILDING.

C.) WHERE THERE ARE SEVERE SPACE CONSTRAINTS DUE TO TRACT SIZE, OR OTHER SPECIAL REQUIREMENTS, CONTACT THE CITY OF SAN ANTONIO TO DISCUSS ALTERNATIVES.

6.) WHERE ANY OF THE ABOVE EXCEPTIONS RESULT IN A FENCE THAT IS CLOSER THAN 4 FEET TO A TREE TRUNK, PROTECT THE TRUNK WITH STRAPPED-ON PLANKING TO A HEIGHT OF 8 FEET (OR TO THE LIMITS OF LOWER BRANCHING) IN ADDITION TO THE REDUCED FENCING PROVIDED.

7.) WHERE ANY OF THE ABOVE EXCEPTIONS RESULT IN AREAS OF UNPROTECTED ROOT ZONES (UNDER DRIPLINES) THOSE AREAS SHOULD BE COVERED WITH 6 INCHES OF ORGANIC MULCH OR GRAVEL TO MINIMIZE SOIL COMPACTION.

8.) ALL GRADING WITHIN PROTECTED ROOT ZONE AREAS SHALL BE DONE BY HAND OR WITH SMALL EQUIPMENT TO MINIMIZE ROOT DAMAGE. PRIOR TO GRADING, RELOCATE PROTECTIVE FENCING TO 2 FEET BEHIND THE GRADE CHANGE AREA.

9.) ANY ROOTS EXPOSED BY CONSTRUCTION ACTIVITY SHALL BE PRUNED FLUSH WITH THE SOIL. BACKFILL ROOT AREAS WITH GOOD QUALITY TOP SOIL AS SOON AS POSSIBLE. IF EXPOSED ROOT AREAS ARE NOT BACKFILLED WITHIN 2 DAYS, COVER THEM WITH ORGANIC MATERIAL IN A MANNER WHICH REDUCES SOIL TEMPERATURE AND MINIMIZES WATER LOSS DUE TO EVAPORATION.

10.) PRIOR TO EXCAVATION OR GRADE CUTTING WITHIN TREE DRIPLINES, A CLEAN CUT SHALL BE MADE BETWEEN THE DISTURBED AND UNDISTURBED ROOT ZONES WITH A ROCK SAW OR SIMILAR EQUIPMENT TO MINIMIZE DAMAGE TO REMAINING ROOTS.

11.) TREES MOST HEAVILY IMPACTED BY CONSTRUCTION ACTIVITIES WILL BE WATERED DEEPLY ONCE A WEEK DURING PERIODS OF HOT, DRY WEATHER. TREE CROWNS ARE TO BE SPRAYED WITH WATER PERIODICALLY TO REDUCE DUST ACCUMULATION ON THE LEAVES.

12.) WHEN INSTALLING CONCRETE ADJACENT TO THE ROOT ZONE OF A TREE USE A PLASTIC VAPOR BARRIER BEHIND THE CONCRETE TO PROHIBIT LEACHING OF LIME INTO THE ROOT ZONE.

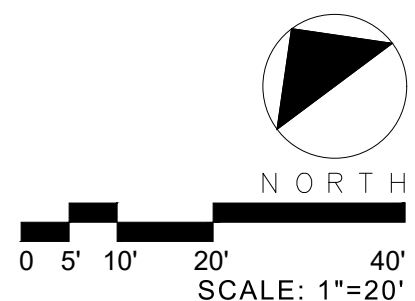
13.) ANY TRENCHING REQUIRED FOR THE INSTALLATION OF LANDSCAPE IRRIGATION SHALL BE PLACED AS FAR FROM EXISTING TREE TRUNKS AS POSSIBLE.

14.) PRUNING TO PROVIDE CLEARANCE FOR STRUCTURES, VEHICULAR TRAFFIC AND CONSTRUCTION EQUIPMENT SHALL TAKE PLACE BEFORE CONSTRUCTION BEGINS (BEFORE DAMAGE OCCURS). ALL FINISHED PRUNING MUST BE DONE ACCORDING TO RECOGNIZED, APPROVED STANDARDS OF THE INDUSTRY; REFERENCE THE NATIONAL ARBORIST ASSOCIATION PRUNING STANDARDS FOR SHADE TREES, CLASS IV OF PRUNING.

15.) ALL WOUNDS ON OAK TREES MUST BE REPAIRED WITHIN 30 MIN. OF OCCURRENCE BY BARK TRACING TO REMOVE DAMAGED WOOD AND BARK THOROUGHLY SEAL WITH AN ACCEPTABLE TREE WOUND DRESSING.

16.) ALL WOUNDS WHICH OCCUR TO TREE TRUNKS AND LIMBS MUST BE REPAIRED WITHIN 24 HOURS OF OCCURRENCE BY BARK TRACING TO REMOVE DAMAGED WOOD AND BARK. THIS SPECIFICALLY APPLIES TO WOUNDS CREATED BY CONSTRUCTION VEHICLES AND EQUIPMENT, INSTALLATION OF TOWERS AND PIERS, AND STRINGING OF ELECTRICAL LINES.

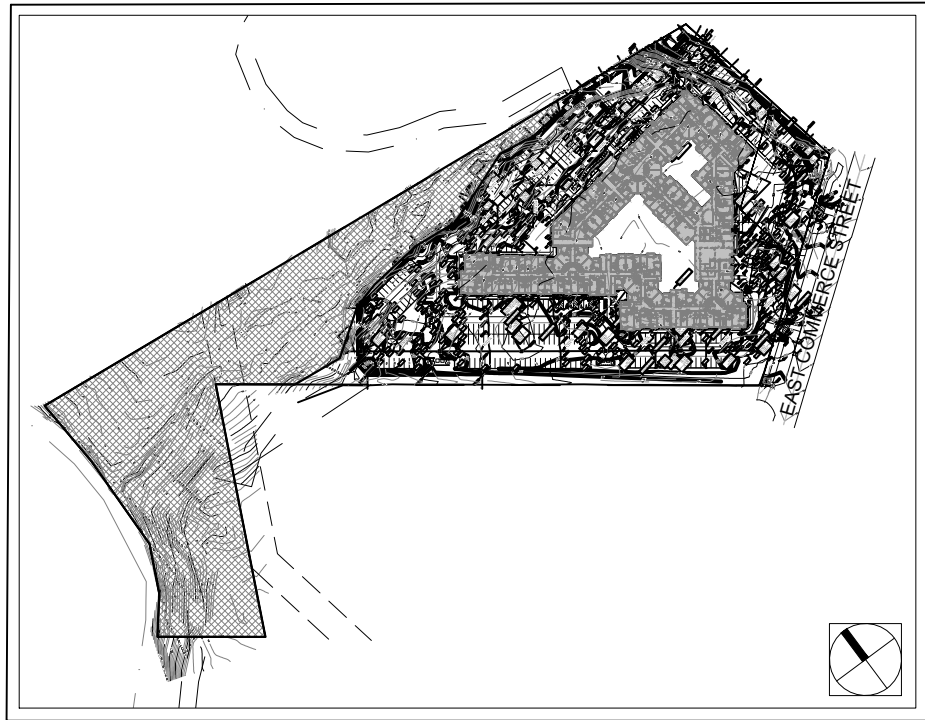
17.) TREES APPROVED FOR REMOVAL OR REPLANTING SHALL BE REMOVED IN A MANNER WHICH DOES NOT IMPACT TREES TO BE PRESERVED.



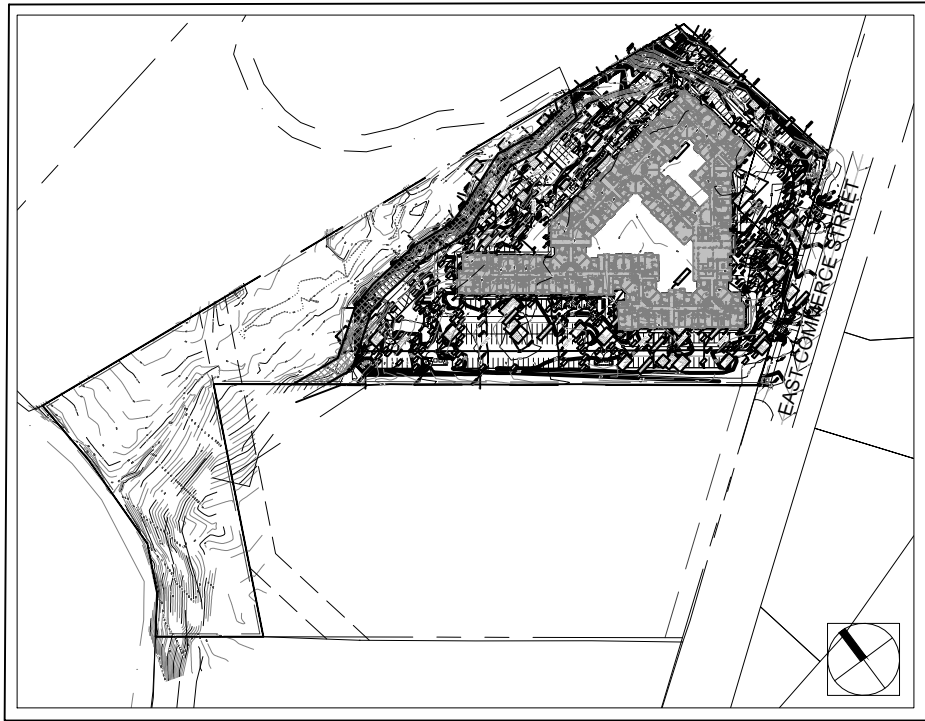


(B) FEMA FLOOD PLAIN TREE INVENTORY															
Tag #	Species	Tree Protection Treatment (TPT)	Understory Species* 5.0" - 11.5"		Significant Tree 6" - 23.5"		Significant Tree** 10.0" - 23.5"		Heritage 3:1		Heritage 1:1		Inches Preserved for Mitigation ***	Not Protected Trees	Notes
			Removed	Preserved	Removed	Preserved	Removed	Preserved	Removed	Preserved	Removed	Preserved	Preserved	Removed	
554	12" HACK	FLD						12							
555	6" ELM	FLD				6									
556	14" HACK	FLD					14								
557	17" ELM	FLD				17									
558	10" HACK	FLD					10								
559	15" ELM	FLD				15									
560	11" HACK	FLD					11								
561	11" HACK	FLD					11								
562	13" HACK	FLD					13								
563	6" ELM	FLD				6									
564	7" ELM	FLD				7									
565	9" ELM	FLD				9									
566	16" ELM	FLD				16									
567	11" ELM	FLD				11									
568	13" ELM	FLD				13									
569	8" ELM	FLD				8									
570	12" HACK	FLD					12								
571	20" ELM	FLD				20									
572	12" HACK	FLD					12								
573	15" HACK	FLD					15								
574	11" HACK	FLD					11								
575	15" ELM	FLD				15									
576	11" HACK	FLD					11								
577	10" ELM	FLD				10									
578	15" ELM	FLD				15									
579	10" HACK	FLD					10								
580	28" ELM	FLD							28						
581	18" ELM	FLD				18									
582	21" ELM	FLD				21									
583	10" ELM	FLD				10									
584	19" ELM	FLD				9									
585	21" ELM	FLD				21									
586	23" ELM	FLD				23									
587	10" HACK	FLD					10								
588	13" HACK	FLD					13								
589	15" HACK	FLD					15								
590	6" ELM	FLD				6									
591	17" HACK	FLD					17								
592	13" HACK	FLD					13								
695	6" CONDALIA	FLD				6									
696	9" ELM	FLD				9									
697	6" ELM	FLD				6									
698	23" ELM	FLD				23									
699	10" CEDAR	FLD				10									
700	9" ELM	FLD				9									
701	16" ASH	FLD					16								
702	12" ELM	FLD				12									
703	20" ASH	FLD					20								
704	15" ELM	FLD				15									
705	7" ELM	FLD				7									
706	10" MESQ	FLD					10								
707	13" MESQ	FLD					13								
Sub. Tot. Inches:			0	0	0	1991.5	0	710	0	228	0	0	164.5	0	0
Total inches by category:				0		1991.5		710		228		0		#REF!	
Preservation percentage:			Understory Preservation (%)	#DIV/0!	Significant Preservation (%)	100%	Heritage Preservation (%)	100%					164.5		
Mitigation required (Commercial) :			0		Commercial (inches)		-1620.9		Heritage Mitigation (inches)		0				
							TOTAL MITIGATION REQUIRED (inches)				-1620.9				
							TOTAL PRESERVATION (%)				100%				

(B) REFERENCE MAP



(C) REFERENCE MAP



(B) NOTE

CALCULATIONS AND PERCENTAGES DISPLAYED ABOVE REFLECT TREES PRESERVED ONLY IN THE FEMA 100 YEAR FLOODPLAIN. THESE CALCULATIONS DO NOT INCLUDE TREES REMOVED OR PRESERVED IN THE UPLAND SITE AREA OR 30' RIPARIAN BUFFER ZONE.

(C) NOTE

CALCULATIONS AND PERCENTAGES DISPLAYED ABOVE REFLECT TREES PRESERVED AND REMOVED ONLY IN THE 30' RIPARIAN BUFFER. THESE CALCULATIONS DO NOT INCLUDE TREES REMOVED OR PRESERVED IN THE UPLAND SITE AREA OR FEMA 100 YEAR FLOODPLAIN.

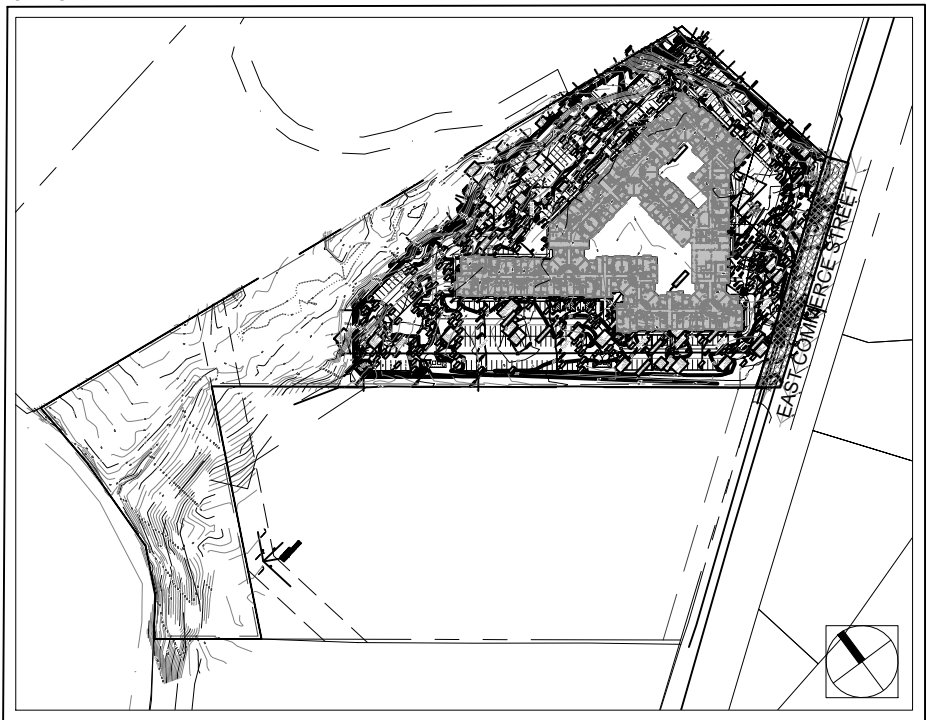
(D) NOTE

CALCULATIONS AND PERCENTAGES DISPLAYED ABOVE REFLECT TREES REMOVED ONLY IN THE PROPERTY RIGHT OF WAY. THESE CALCULATIONS DO NOT INCLUDE TREES REMOVED OR PRESERVED IN THE UPLAND SITE AREA, FEMA 100 YEAR FLOODPLAIN OR RIPARIAN BUFFER. FURTHERMORE THESE TREES HAVE BEEN MITIGATED AT 100%, BUT ARE NOT INCLUDED IN (E) PRESERVATION PERCENTAGE CALCULATIONS.

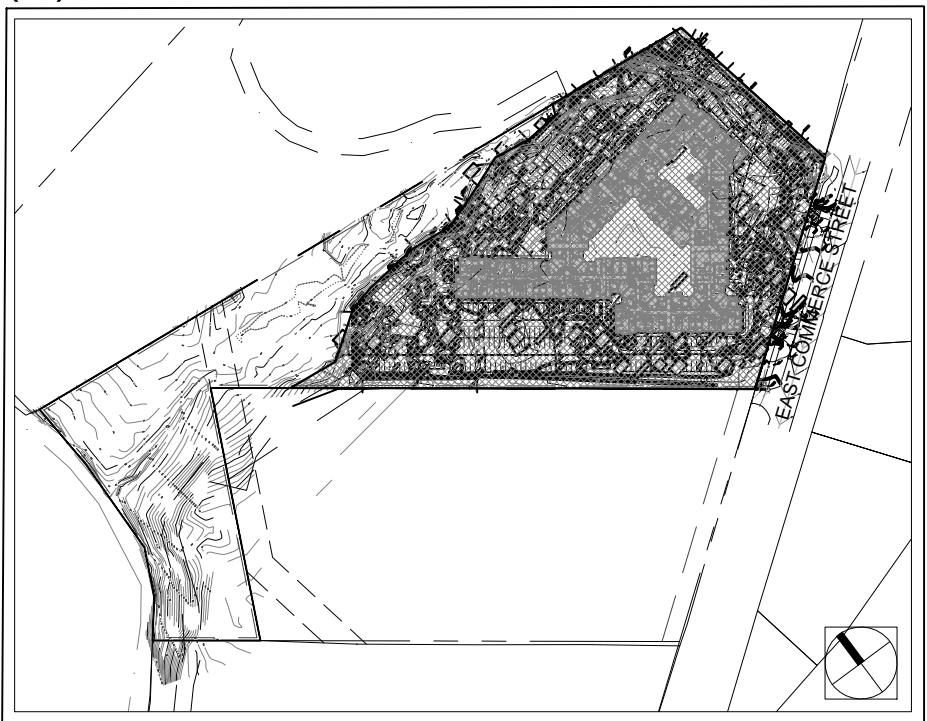
(E) NOTE

CALCULATIONS AND PERCENTAGES DISPLAYED ABOVE REFLECT TREES PRESERVED AND REMOVED IN THE 30' RIPARIAN BUFFER AND THE UPLAND SITE. THESE CALCULATIONS DO NOT INCLUDE TREES PRESERVED IN FEMA 100 YEAR FLOODPLAIN.

(D) REFERENCE MAP



(E) REFERENCE MAP



(C) 30' RIPARIAN BUFFER															
Tag #	Species	Tree Protection Treatment (TPT)	Understory Species* 5.0" - 11.5"		Significant Tree 6" - 23.5"		Significant Tree** 10.0" - 23.5"		Heritage 3:1		Heritage 1:1		Additional Inches Preserved for Mitigation ***	Not Protected Trees	Notes
			Removed	Preserved	Removed	Preserved	Removed	Preserved	Removed	Preserved	Removed	Preserved	Preserved	Removed	
442	6" ELM						6								
448	6" ELM						6								
449	6" ELM						6								
450	7" ELM						7								
461	6" ELM						6								
465	13" MESQ							13							
471	7" ELM						7								
472	6" ELM						6								
474	7" ELM						7								
479	10" ELM						10								
480	6" PERSIMMON			6											
481	11" MESQ							11							
482	13" MESQ							13							
540	15" ELM						15								
544	17" ELM				17										
593	6" ELM						6								
594	14" HACK							14							
596	6" ELM						6								
597	10" HACK							10							
600	8" ELM						8								
601	12" HACK							12							
603	14" HACK							14							
609	10" HACK							10							
610	12" HACK							12							
611	12" HACK							12							
612	19" ELM				19										
615	11" HACK							11							
616	10" HACK							10							
617	10" HACK							10							
620	12" HACK							12							
622	10" HACK							10							
623	14" HACK							14							
624	10" HACK							10							
Sub. Tot. Inches:			0	6	36	96	101	97	0	0	0	0	0	0	
Total inches by category:				6		132		198		0		0		0	
Preservation percentage:		Understory Preservation (%)	100%		Significant Preservation (%)		58%		Heritage Preservation (%)		#DIV/0!		#REF!		
Mitigation required (Commercial) :			0		Commercial (inches)		71		Heritage Mitigation (inches)		0				
									TOTAL MITIGATION REQUIRED (inches)				71		
									TOTAL PRESERVATION (%)				59%		
No category to fall below 20% preservation;															
<b>Preserved</b> - Tree to remain that meets root protection zone requirements described in section 35-523 of the UDC.															
100% preservation of heritage trees are required. If not met, must mitigate at 3:1 ratio, unless listed below as small species.															
40% preservation required of significant trees are required. If not met, must mitigate at 1:1 ratio.															
* <b>Small species:</b> Condalia, Redbud, Tx. Mountain Laurel, Tx. Persimmon, Hawthorn, Possumhaw, Palms - these are mitigated at 1:1 for Heritage Trees															
** Ashe Juniper, Huisache, Mesquite, Arizona Ash, Hackberry protected at 10" dbh and mitigated at 1:1 for heritage trees															
*** <b>Additional Preserved Inches for Mitigation Trees:</b> Unprotected-sized trees to be used for mitigation calculations; subtract inches from mitigation owed															

(D) PROPERTY RIGHT OF WAY															
Tag #	Species	Tree Protection Treatment (TPT)	Understory Species* 5.0" - 11.5"		Significant Tree 6" - 23.5"		Significant Tree** 10.0" - 23.5"		Heritage 3:1		Heritage 1:1		Additional Inches Preserved for Mitigation ***	Not Protected Trees	Notes
			Removed	Preserved	Removed	Preserved	Removed	Preserved	Removed	Preserved	Removed	Preserved	Preserved	Removed	
350	6" ELM						10								
351	6" ELM						14								
358	6" ELM						12								
811	7" ELM						18								
Sub. Tot. Inches:			0	0	0	0	54	0	0	0	0	0	0	0	
Total inches by category:				0		0	54		0		0			0	
Preservation percentage:		Understory Preservation (%)	#DIV/0!		Significant Preservation (%)		0%		Heritage Preservation (%)		#DIV/0!		#REF!		
Mitigation required (Commercial) :			0		Commercial (inches)		54		Heritage Mitigation (inches)		0				
								TOTAL MITIGATION REQUIRED (inches)					54		
								TOTAL PRESERVATION (%)					0%		



**GENERAL CONTRACTOR**  
**Cohen-Esrey Development**  
**Group, LLC**  
8500 Shawnee Mission Pkwy, Suite 150  
Merriam, KS 66202  
P. 913.671.3300

**CIVIL ENGINEER**  
**Southtown Engineering and Consulting, LLC**  
Amir@southtowneng.com  
San Antonio, Texas  
P. 210.723.8703

LANDSCAPE ARCHITECT  
**Coral Studio**

1432 S St. Mary's  
San Antonio, Texas 78210  
P. 210.963.7447

**MEP ENGINEER & STRUCTURAL ENGINEER**  
**Encotech Engineering**  
**Consultants**  
 8500 Bluffstone Cove, Suite B-103  
 Austin, Texas 78759  
 P. 512.338.1101

[illegible]

CLIENT COHEN-ESREY  
DEVELOPMENT  
GROUP, LLC

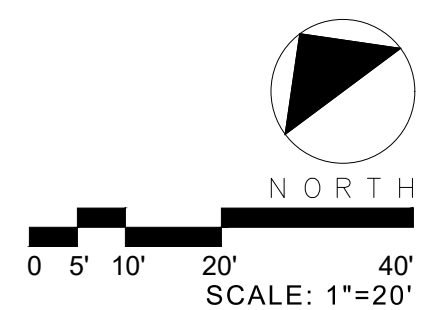
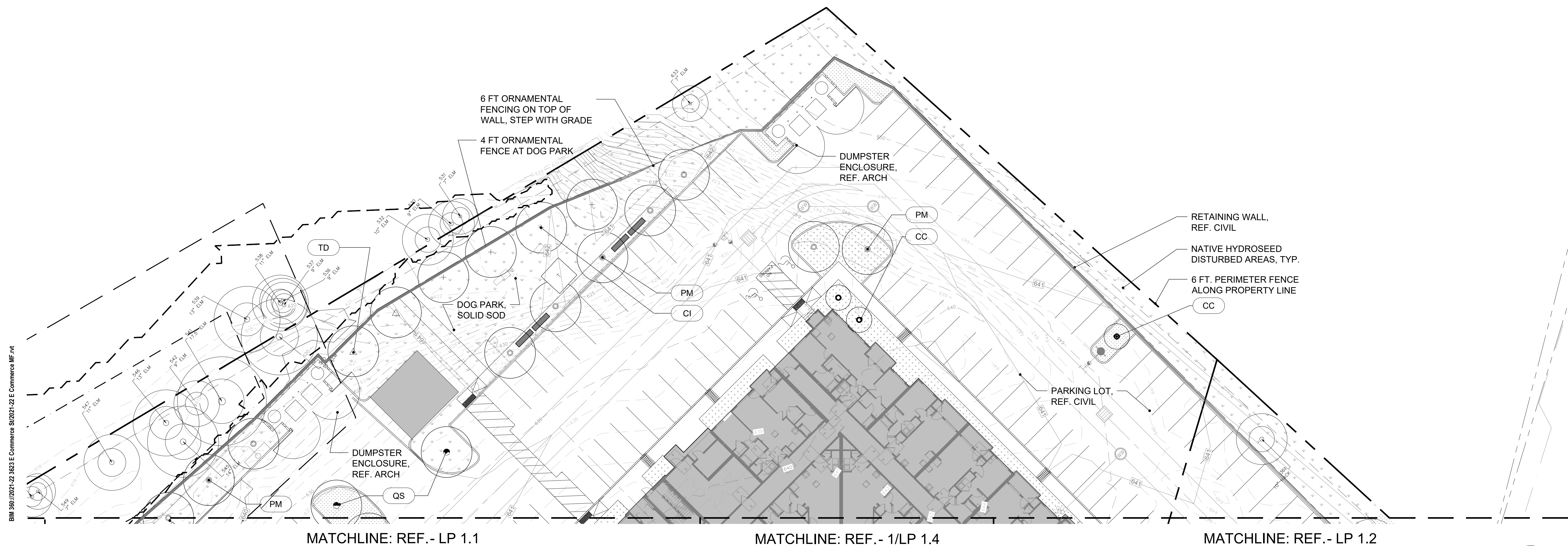
PROJECT NUMBER: 2021-22  
PROJECT NAME  
**THE LOFTS AT  
CREEKVIEW**  
EAST COMMERCE STREET  
SAN ANTONIO, TX, 78219



100% CD SET

## PLANTING PLAN

## LP 1.5





**GENERAL CONTRACTOR**  
**Cohen-Esrey Development**  
**Group, LLC**  
8500 Shawnee Mission Pkwy, Suite 150  
Merriam, KS 66202  
P. 913.671.3300

**CIVIL ENGINEER**  
**Southtown Engineering and Consulting, LLC**  
Amir@southtowneng.com  
San Antonio, Texas  
P. 210.723.8703

LANDSCAPE ARCHITECT  
**Coral Studio**

1432 S St. Mary's  
San Antonio, Texas 78210  
P. 210.963.7447

**MEP ENGINEER & STRUCTURAL ENGINEER**  
**Encotech Engineering Consultants**  
8500 Bluffstone Cove, Suite B-103  
Austin, Texas 78759  
P. 512.338.1101

[illegible]

CLIENT COHEN-ESREY  
DEVELOPMENT  
GROUP, LLC

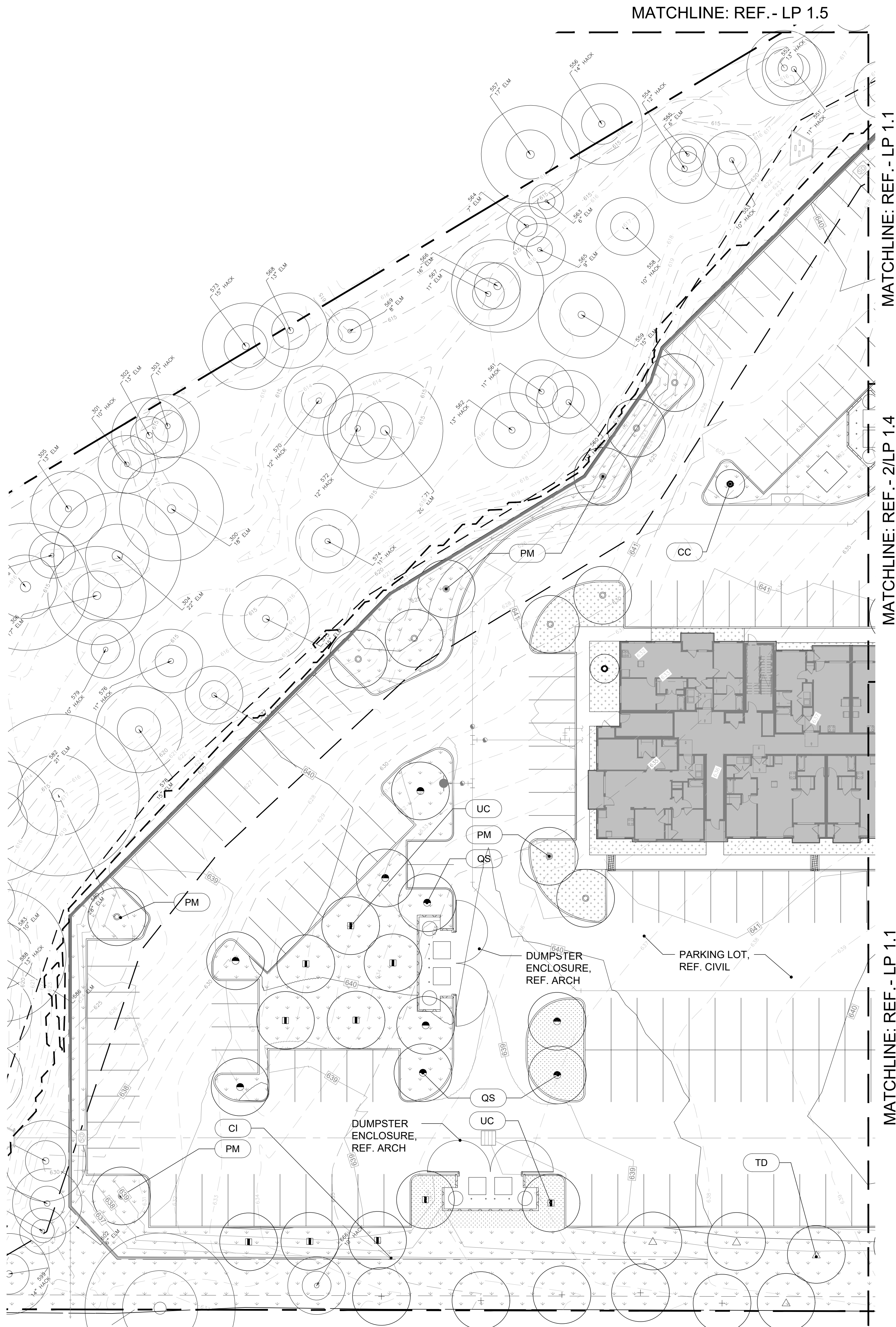
PROJECT NUMBER: 2021-22  
PROJECT NAME  
**THE LOFTS AT  
CREEKVIEW**  
EAST COMMERCE STREET  
SAN ANTONIO, TX, 78219



100% CD SET

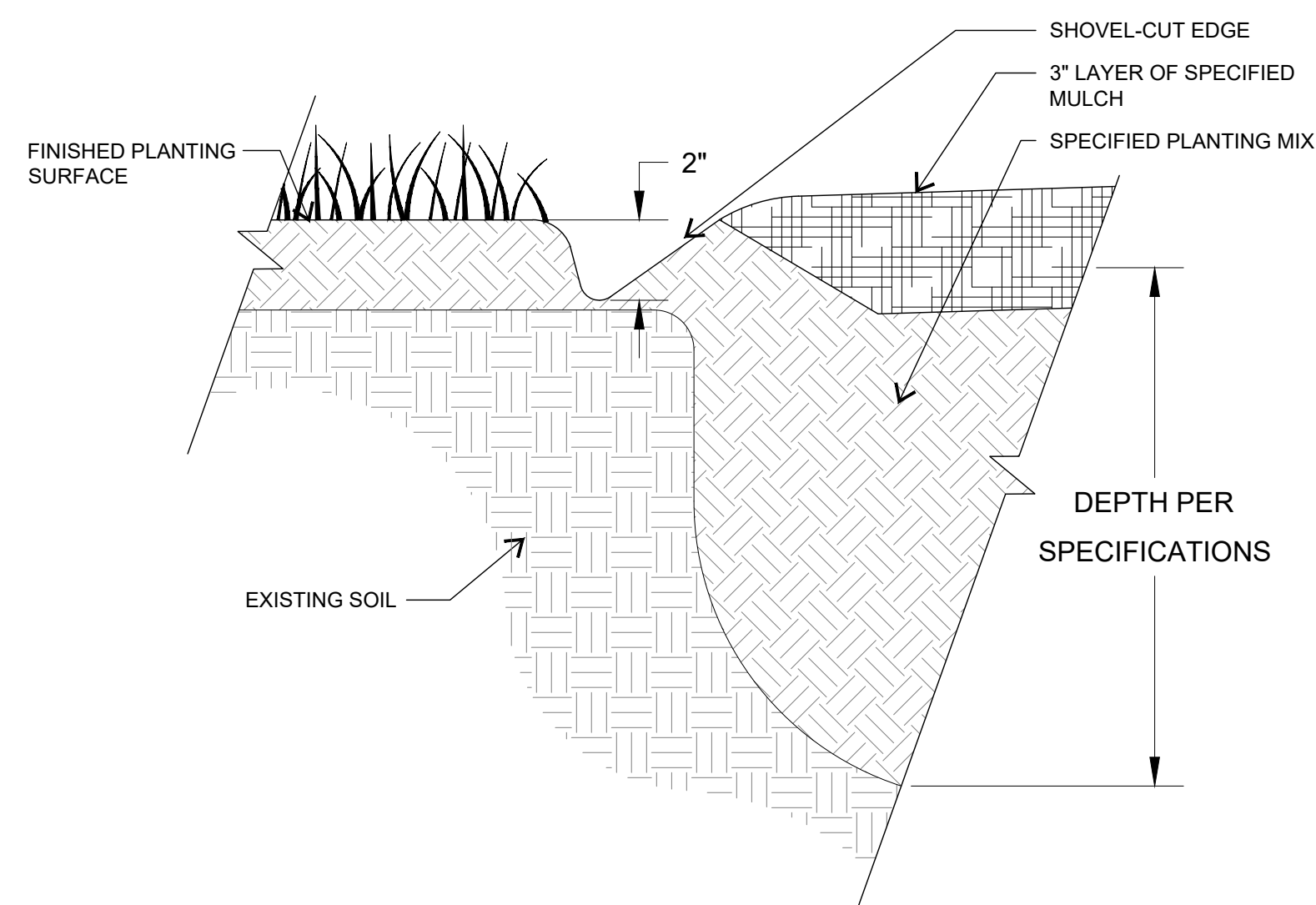
## PLANTING PLAN

## LP 1.6



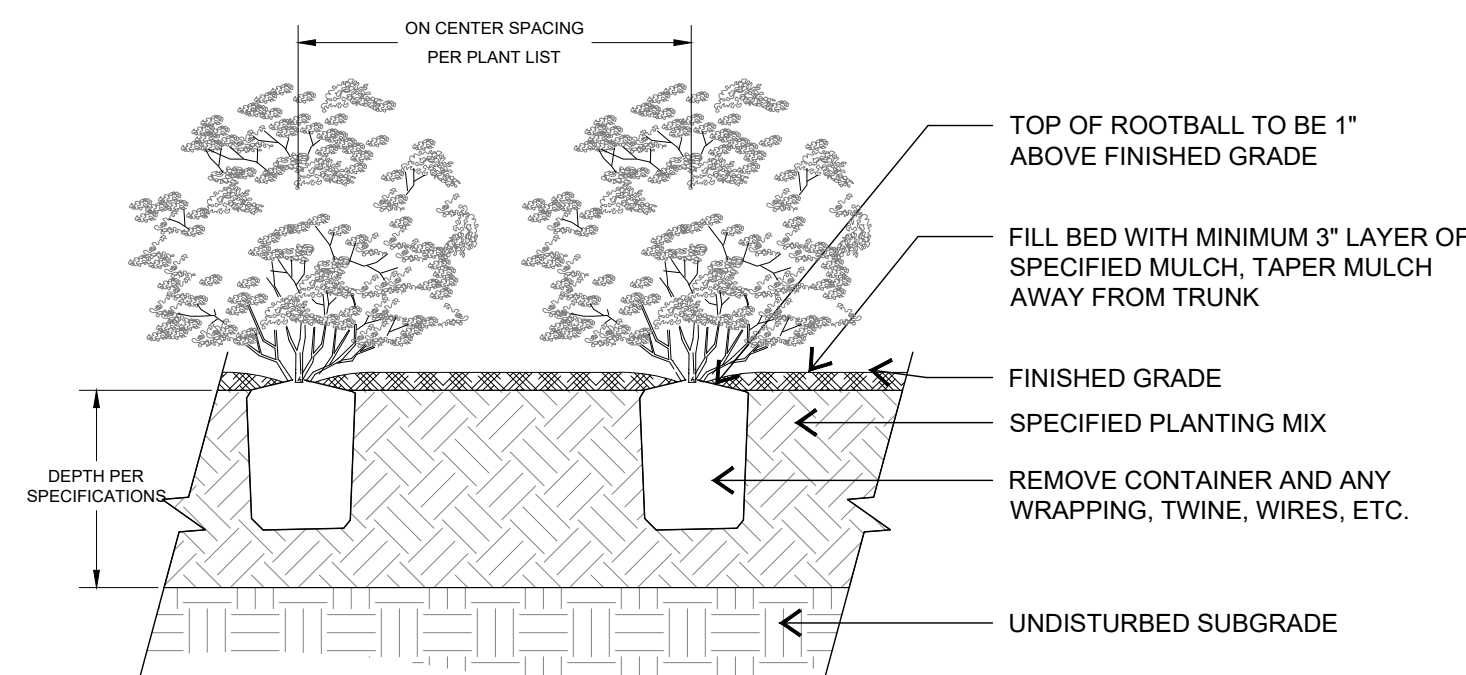


PLANT LIST					
SHADE TREES					
SYMBOL	KEY	COMMON NAME	SCIENTIFIC NAME	SIZE	REMARKS
	TD	BALD CYPRESS	<i>Taxodium distichum</i>	4" CAL. 14 FT. HT. 10 FT. SPREAD	SINGLE TRUNK, STRAIGHT LEADER, UNIFORM, FULL CANOPY
	TD6	BALD CYPRESS	<i>Taxodium distichum</i>	6" CAL. 14 FT. HT. 10 FT. SPREAD	SINGLE TRUNK, STRAIGHT LEADER, UNIFORM, FULL CANOPY
	PM	MEXICAN SYCAMORE	<i>Platanus mexicana</i>	6" CAL. 14 FT. HT. 10 FT. SPREAD	SINGLE TRUNK, STRAIGHT LEADER, UNIFORM, FULL CANOPY
	CI	PECAN	<i>Carya illinoensis</i>	4" CAL. 14 FT. HT. 10 FT. SPREAD	SINGLE TRUNK, STRAIGHT LEADER, UNIFORM, FULL CANOPY
	CI6	PECAN	<i>Carya illinoensis</i>	6" CAL. 14 FT. HT. 10 FT. SPREAD	SINGLE TRUNK, STRAIGHT LEADER, UNIFORM, FULL CANOPY
	UC	CEDAR ELM	<i>Ulmus crassifolia</i>	4" CAL. 14 FT. HT. 10 FT. SPREAD	SINGLE TRUNK, STRAIGHT LEADER, UNIFORM, FULL CANOPY
	QS	SHUMARD RED OAK	<i>Quercus shumardii</i>	4" CAL. 14 FT. HT. 10 FT. SPREAD	SINGLE TRUNK, STRAIGHT LEADER, UNIFORM, FULL CANOPY
SHADE AND ORNAMENTAL TREES					
SYMBOL	KEY	COMMON NAME	SCIENTIFIC NAME	SIZE	REMARKS
	CC	TEXAS REDBUD	<i>Cercis canadensis</i> var. <i>texensis</i>	2" CAL. 8 FT. HT. 5 FT. SPREAD	SINGLE TRUNK, STRAIGHT LEADER, UNIFORM, FULL CANOPY
	PA	RETAMA PALO VERDE	<i>Parkinsonia aculeata</i>	2" CAL. 8 FT. HT. 5 FT. SPREAD	SINGLE TRUNK, STRAIGHT LEADER, UNIFORM, FULL CANOPY
TURF					
SYMBOL	KEY	COMMON NAME	SCIENTIFIC NAME	SIZE	REMARKS
		THUNDER TURF AND NATIVE TRAIL MIX	N/A	HYDROMULCH	INSTALL PER MANUFACTURER RECOMMENDATION. NATIVE AMERICAN SEED (800) 728-4043
		BERMUDA SOD	<i>Cynodon Dactylon</i>	SOLID SOD	MACHINE ROLL FLAT, QUANTITY AS SHOWN ON PLAN



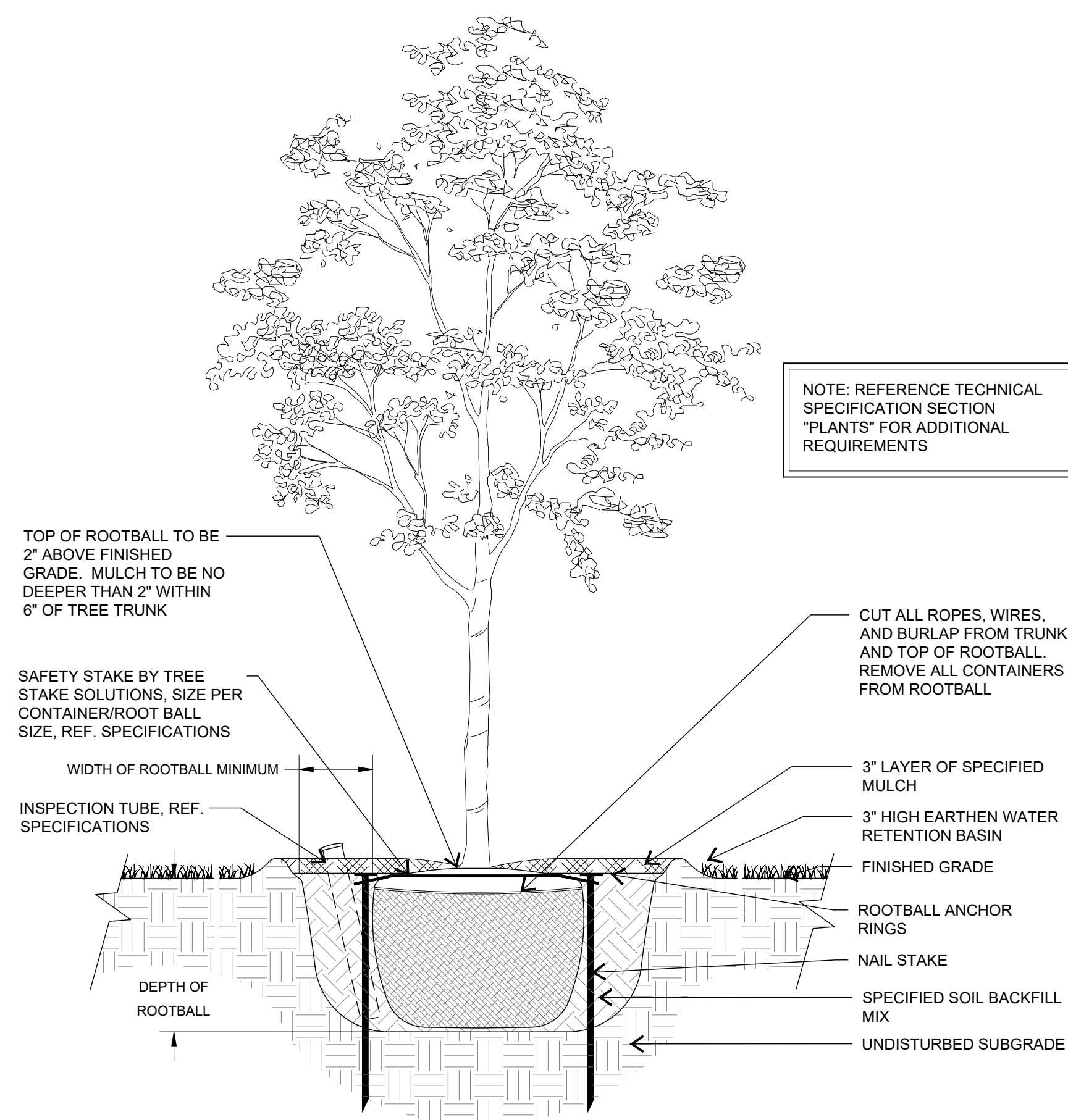
### 3 SHOVEL CUT EDGE AT PLANTING BED

SECTION CUT NOT TO SCALE



## 2 SHRUB BED PLANTING

SECTION CUT NOT TO SCALE



# 1 TREE PLANTING

---

SECTION CUT NOT TO SCALE

[illegible]

CLIENT COHEN-ESREY  
DEVELOPMENT  
GROUP, LLC

PROJECT NUMBER: 2021-22

PROJECT NAME

THE LOFTS AT  
CREEKVIEW

EAST COMMERCE STREET  
SAN ANTONIO, TX, 78219



100% CD SET

## PLANTING LIST AND DETAILS

## LP 2.1